

DRAFT FINAL FORMER ACM SMELTER/REFINERY SITE LAND USE PLAN -

POTENTIAL PROJECTS UPDATE

VIRTUAL PUBLIC MEETING - MARCH 8, 2021

AGENDA

- Introduction (10 minutes)
 - Introduction of Presenters - Elizabeth Erickson (WET)
 - Land Use Project Review - Elizabeth Erickson (WET)
 - Amphitheater Project Presentation (15 minutes)
 - Presentation of Amphitheater Conceptual Plan – Ryan Buffington-TDH Engineering
 - Ski Hill Project Presentation (15 minutes)
 - Presentation of Ski Hill Project Idea– George Willet
 - ***Questions/Comments – Joe Briggs, BOCC Chair***
 - Meeting Wrap Up –
 - ***Next steps (30-day comment period)***
-

PLAN DEVELOPMENT

DRAFT PLAN DEVELOPMENT

- Funding: EPA Superfund Cooperative Agreement with Cascade County
 - Created Workgroup
 - Commissioners, County & City officials, Design Team, Agencies
 - Background Document Review
 - Superfund documents, previous plans, historic preservation, etc.
 - Site Tour – August 30, 2017
 - Conduct Stakeholder Meetings:
 - Public Listening Session (Sept. 11, 2017): ~75-80 participants
 - Develop Draft Plan
 - Multiple versions/edits based on site conditions & feedback
 - Present Draft Plans to Public (Nov. 14, 2017): ~45-50 participants
 - Finalize Changes from Comment Period
 - Present Draft Final Plans to Public (Feb. 20, 2018): ~35-40 participants
-

OUTREACH EFFORTS – PUBLIC/COMMUNITY

- Stakeholders Meetings
 - Cascade County Commissioners
 - Cascade County Environmental Health
 - Cascade County Public Works
 - Black Eagle Park Board
 - Black Eagle Sewer & Water
 - Black Eagle TAG
 - City of Great Falls Public Works
 - City of Great Falls Planning Dept.
 - MT State Parks
-

OUTREACH EFFORTS – PUBLIC/COMMUNITY

- Stakeholders Meetings (continued)
 - Great Falls Trail Bike Riders
 - Stack Replica Group/Black Eagle Civic Group
 - Electric City Dirt Bike Riders
 - Rivers Edge Trails Foundation/Rec. Trail Inc.
 - Upper Missouri Heritage Area Planning Corp
 - Lewis & Clark Interpretive Center Foundation
 - Great Fall Disc Golf
 - Off Trail Bike Course
 - Little Shell Tribe Representatives
-

OUTREACH – AGENCIES/LANDOWNERS

- Agencies & Landowners
 - Environmental Protection Agency (EPA)
 - MT Department of Environmental Quality (MDEQ)
 - Atlantic Richfield
 - NorthWestern Energy
 - BNSF Railroad
-

**ACM
SMELTER/REFINERY
LAND USE PLAN (OU-2)
OPTIONS**

ACM SUPERFUND COOPERATIVE AGREEMENT

FEBRUARY 2018



OU2 LAND USE MASTER PLAN



ACM SUPERFUND COOPERATIVE AGREEMENT

FEBRUARY 2018

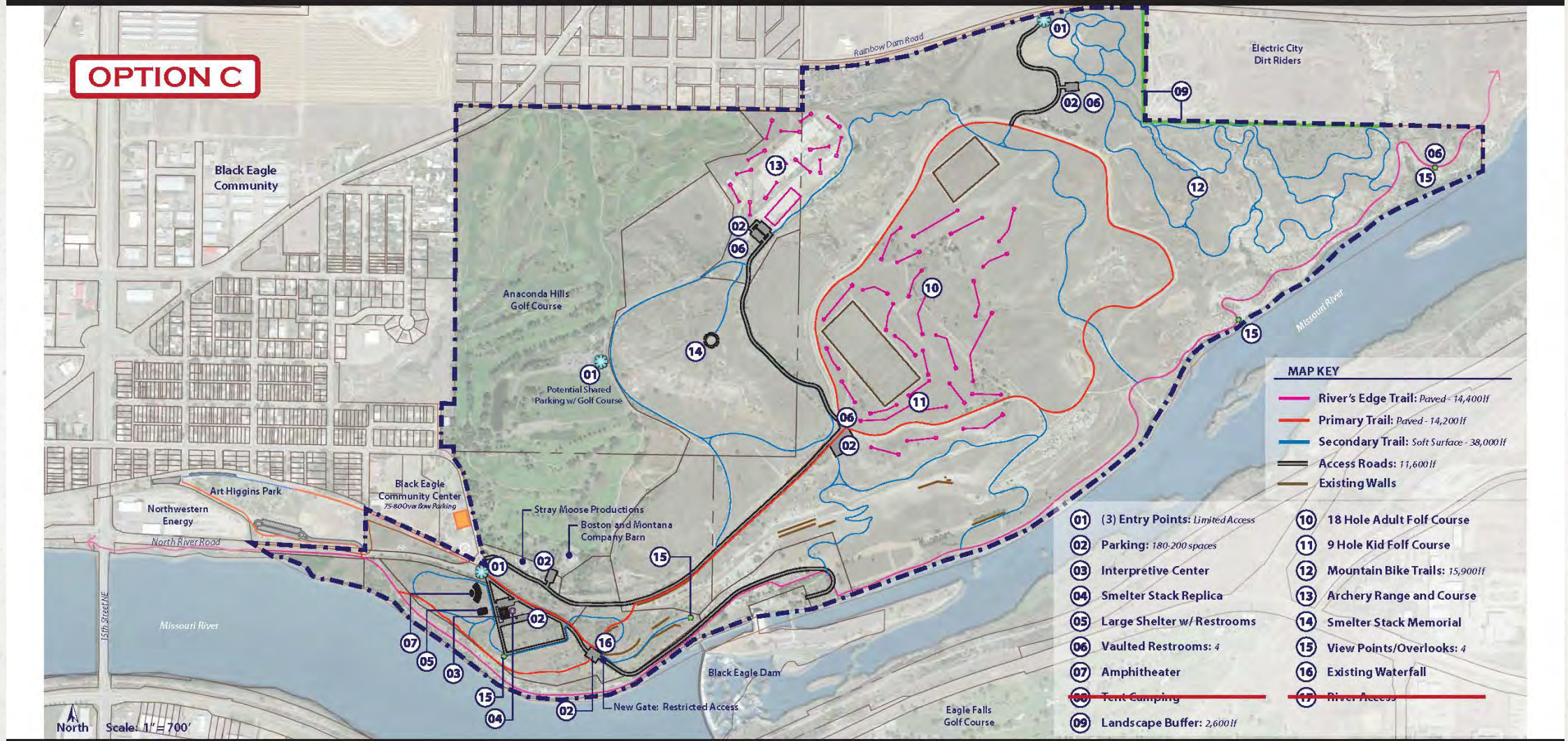


OU2 LAND USE MASTER PLAN



ACM SUPERFUND COOPERATIVE AGREEMENT

FEBRUARY 2018



OU2 LAND USE MASTER PLAN



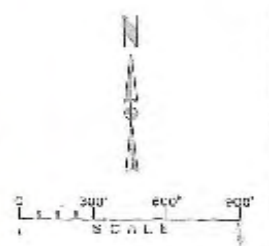
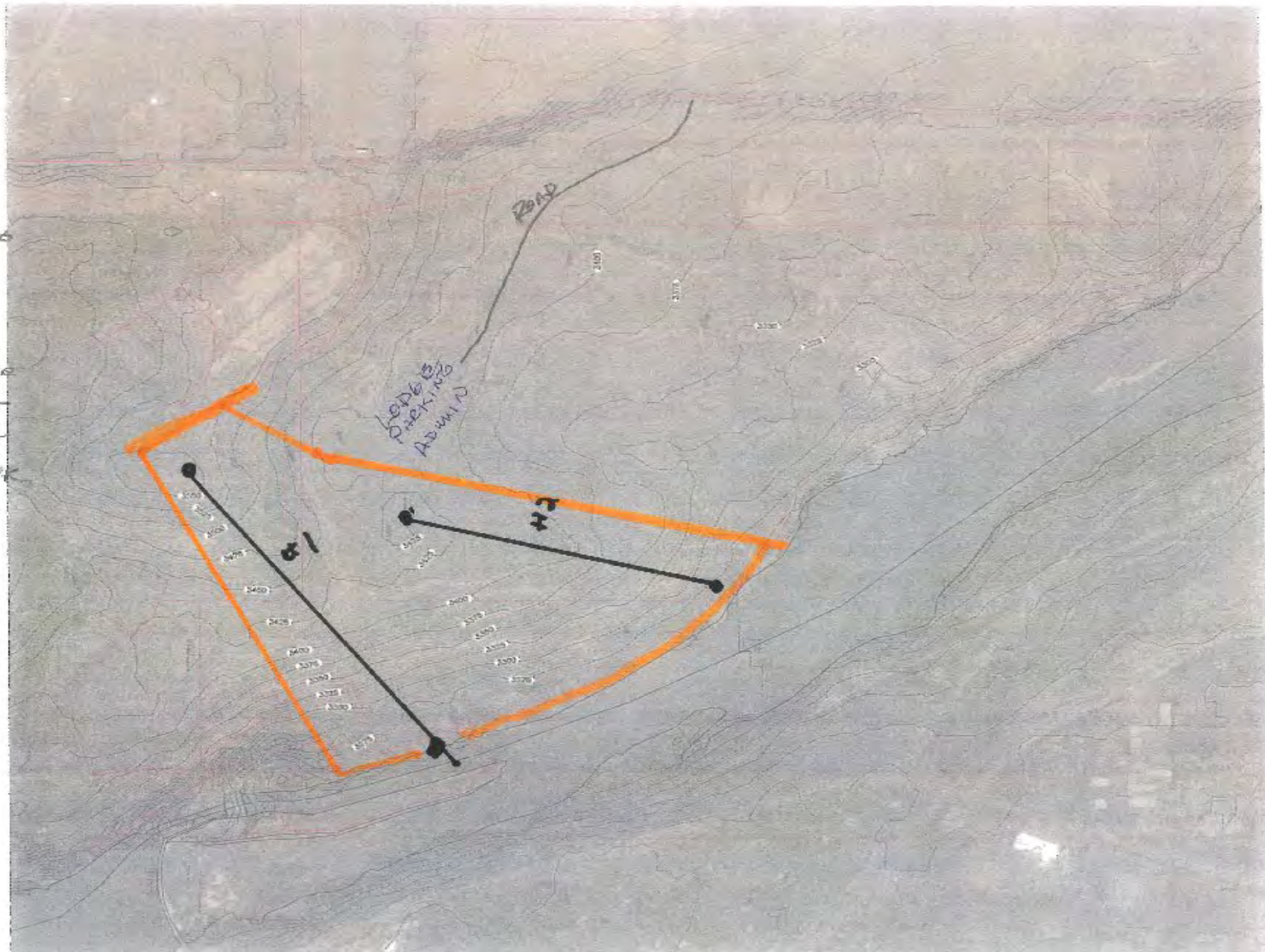
ADDITIONAL MAPS

KEY
#1 LIFT
#2 LIFT

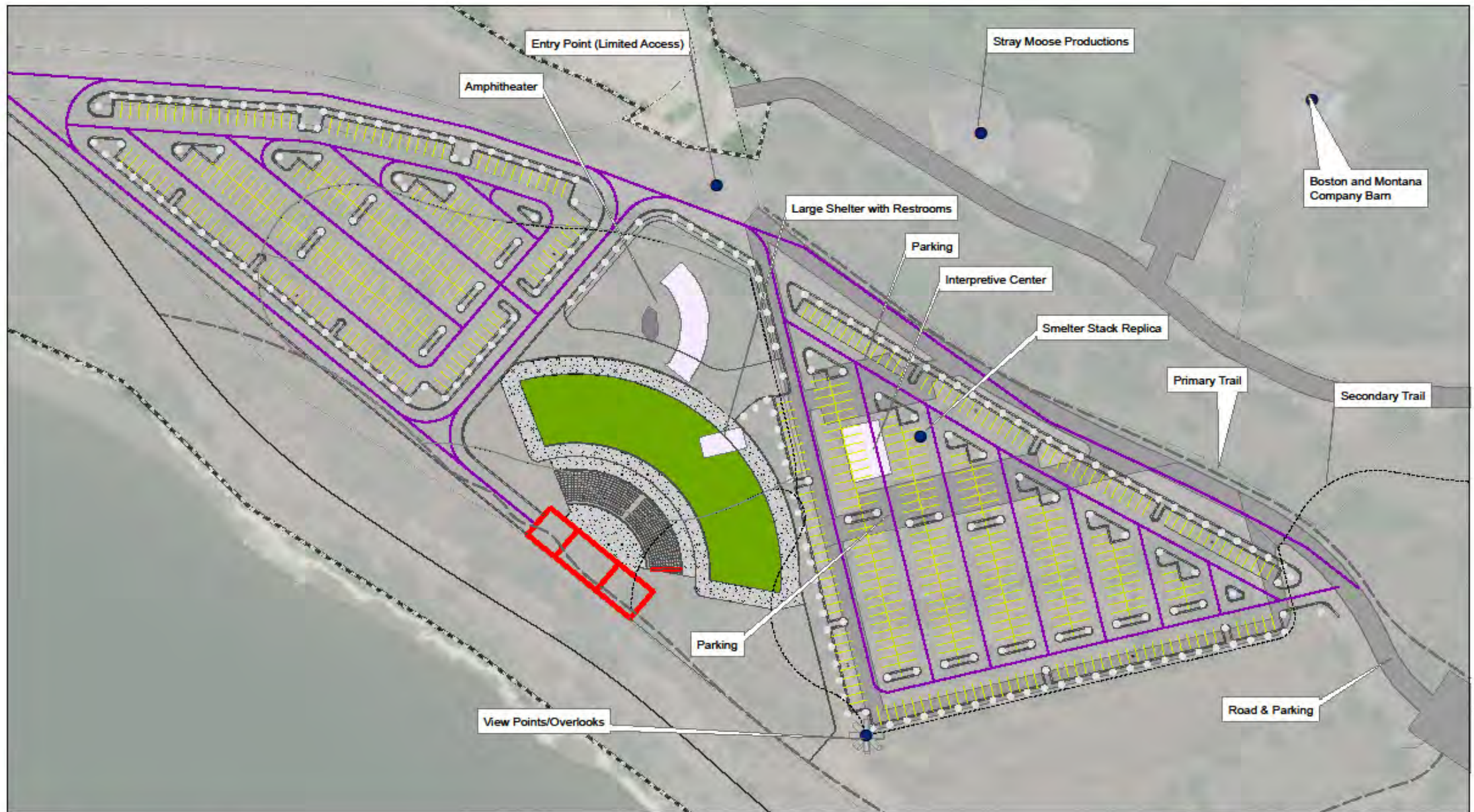
SNOW MAKING AREA
LIGHTING AREA

OTHER POSSIBLE ACTIVITIES

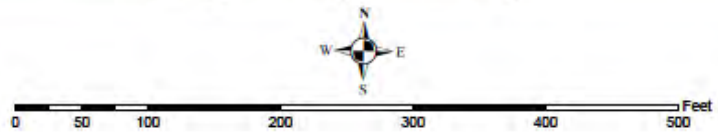
TUBBING HILL
TERRAIN PARK
RACE HILL



ARCO SITE



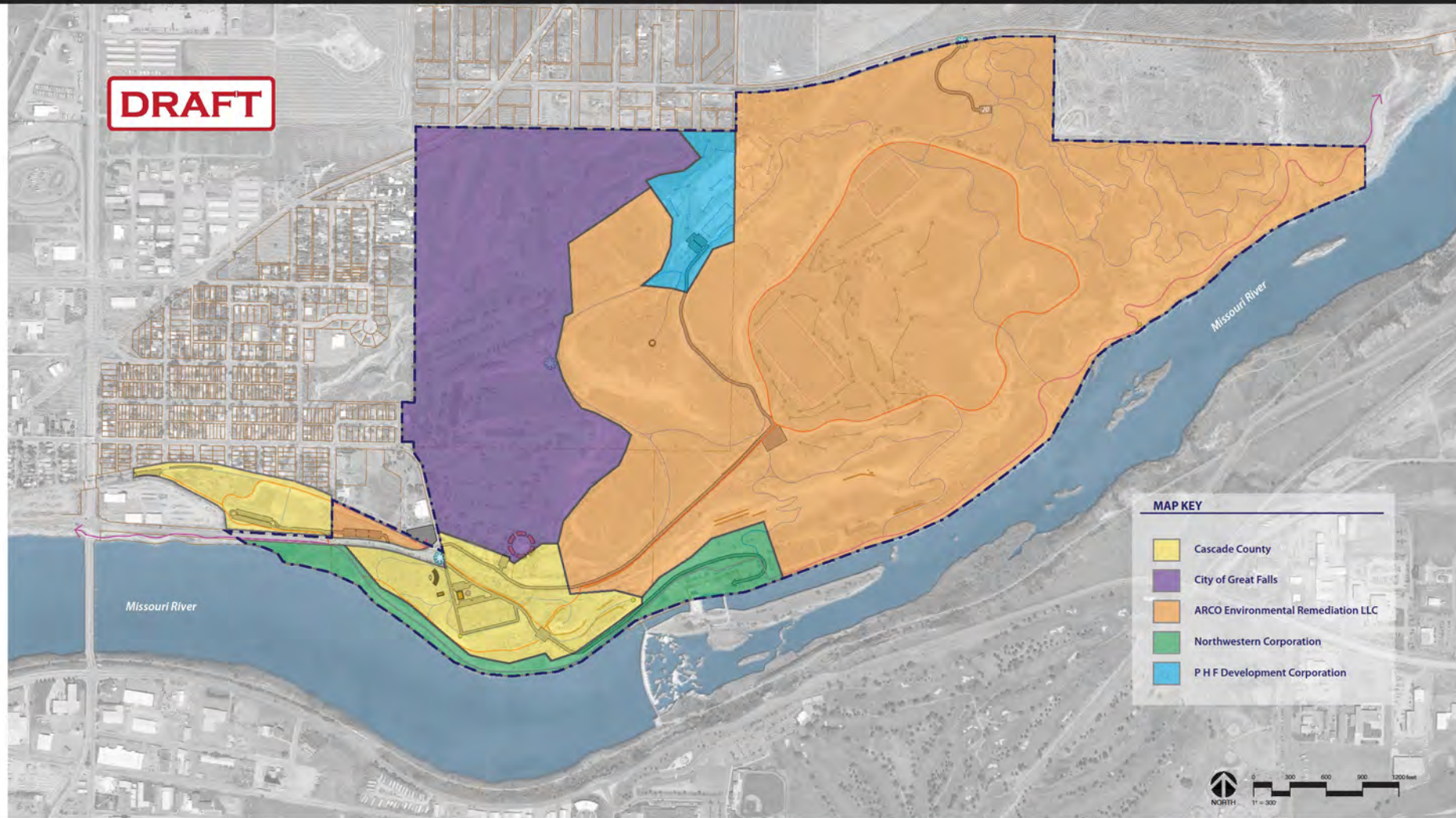
Legend		



 WET Watershed Environmental Technology Solutions	OU-2 Land Use Master Plan	
	Site Location - Aerial Cascade County, MT	
	Job# CASC001	FIGURE 1a
	Date: 8/25/2020	
<small>File: 8/25/2020 Meeting 2.mxd Author: jw...</small>		

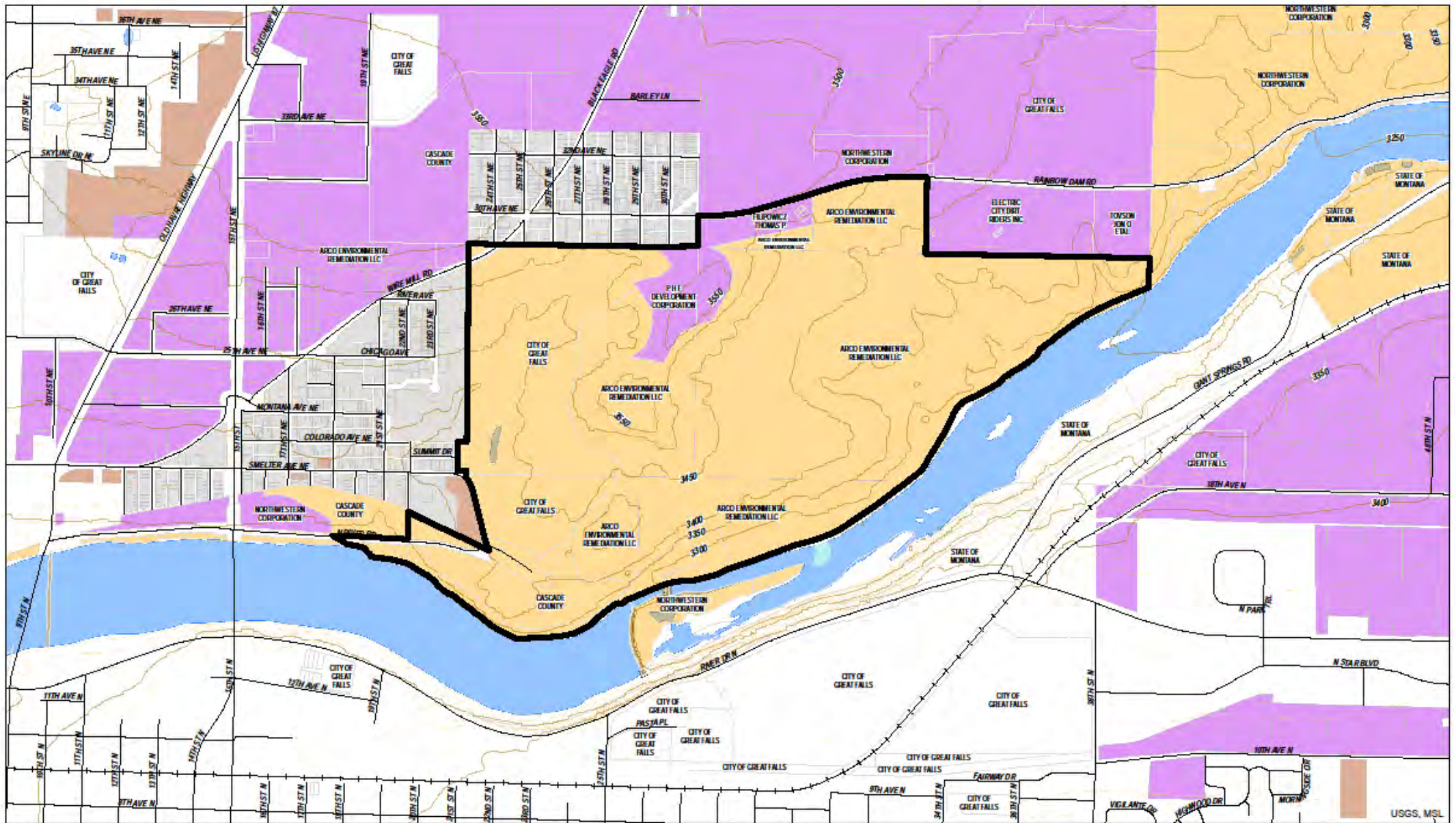
ACM SUPERFUND COOPERATIVE AGREEMENT

Nov. 14, 2017



LAND OWNERSHIP MAP





Legend

Superfund Operable Unit 2 Boundary	ZONING CODE	URBAN RESIDENTIAL
Major Topographic Contour (50 ft)	COMMERCIAL	
Minor Topographic Contour (10 ft)	INDUSTRIAL	
Ownership Parcel	OPEN SPACE	

Feet

	Former ACM Refinery Land Use Master Plan	
	Zoning	
	Cascade County, MT	
	JOB# CASC001 Date: 10/25/2018 <small>File: WACM011010252018.mxd, Author: jayson</small>	FIGURE 8